

CR 12-X

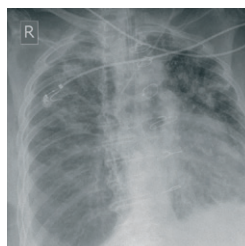


WITH ITS SIMPLE YET SMART DESIGN, THE AFFORDABLE, COMPACT AND FAST CR 12-X DIGITIZER OFFERS AN IDEAL SOLUTION FOR CLINICS AND PRIVATE PRACTICES. THIS COST-EFFECTIVE ENTRY INTO DIGITAL RADIOGRAPHY COMBINES HIGH IMAGE QUALITY WITH A WORKFLOW THAT ADDRESSES YOUR PRIORITIES.

Affordable and efficient computed radiography solution offering high image quality and high speed

The tabletop CR 12-X digitizer is based on proven Agfa HealthCare technology, with a modular yet robust design combining affordability with high image quality, adjustable speed and a user-tuned workflow. Versatile, this computed radiography (CR) digitizer can handle general radiography, orthopaedic, chiropractic and Full Leg/Full Spine applications. The total cost of ownership remains low, thanks to its ease of installation, maintenance and use, making it an affordable way to move from analog to digital. With the CR 12-X, clinics and private practices can take advantage of the convenient and fast workflow offered by digital radiography.

- Affordable and efficient computed radiography solution offering high image quality and high throughput.
- Convenient and fast workflow, with user-controllable speed and resolution
- Robust yet easy to install and maintain
- Fits in small spaces and is suited for mobile applications
- Networking capabilities deliver seamless integration



Balancing speed and resolution

With the CR 12-X, the user can choose to adjust speed and resolution depending on the needs of the exam. The user can easily overwrite the default settings for each exam, depending on the specific speed/quality priorities, study by study.

Convenient and fast workflow

The CR 12-X works in conjunction with NX, Agfa HealthCare's image identification and quality control tool, for a highly efficient and optimized, yet customizable, radiology workflow.

It comes with Agfa HealthCare's gold-standard MUSICA² software, which automatically handles all calibration and image processing, independently of body part and dose, optimizing the final image quality without the need for any human intervention or special training.



Robust yet easy to install and maintain

Installing the CR 12-X is fast and easy. Special LED technology in the erasure unit means low power consumption. With its 'one screwdriver' concept and modular, component-based design, maintenance is faster, easier and more cost-effective, as well. Consequently, set up costs are lower and installation simpler. Horizontal cassette insertion prevents dust and dirt from being introduced during normal operation.

Fits in small spaces and is suited for mobile applications

With its table-top size, the CR 12-X digitizer can be placed easily at any location, no matter how small, and was designed with ease of use in mind. The CR 12-X can also be fitted into cars, vans, trucks and other mobile facilities, for mobile applications. Due to the low power consumption, connection to battery can be easily realized.

Networking capabilities deliver seamless integration

The CR 12-X is fully DICOM-compliant, to easily integrate with other solution elements; we recommend combining it with Agfa HealthCare's SE software suite for a complete softcopy solution, or with the DRYSTAR 5302 imager for a hardcopy solution.



Bar code

To guarantee highest image quality, each image plate features a bar code which contains all plate specific data.

General Radiography & FLFS : imaging plate and cassette

CASSETTE SIZES

	Cassette Sizes	Spatial Resolution
CR MD1.0 General	35 x 43 cm (14 x 17")	<p>For General Radiography</p> <p>10 pixels/mm 6.6 pixels/mm 5 pixels/mm</p> <p>For FLFS</p> <p>10 pixels/mm 5 pixels/mm</p>

technical

SPECIFICATIONS

GENERAL

Digitizer type

- Single cassette feed
- Cycle time: 35 x 43 cm (14 x 17"): 60 seconds (depending on resolution)

Display

- LED Status Indicator
- Status and error messages on external PC monitor

Greyscale resolution

- Data acquisition: 20 bits/pixel
- Output to processor: 16 bits/pixel square root compressed

Dimensions and weight

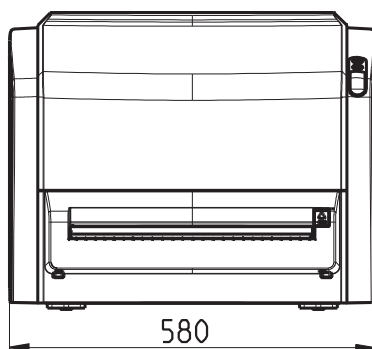
- W x D x H: 580 x 700 x 471 mm
- Depth without cassette unit and extension: 380 mm
- Weight: 29 kg

Power

- Autoranging external power supply (24 V output)
- Input:
 - 100 V - 240 V
 - < 2 A
 - 50/60 Hz
 - Fuse: Europe max 16 A; USA max 15 A

Minimum requirements

- CR MD1.0 General Cassette
- CR MD1.0 General Plate
- NX Workstation



Environmental conditions

- In line with: IEC 721-3-3 (1997): class 3K2, with the following extension:
 - Temperature: 15 - 35° C

Environmental effects

- Noise level: max. 65 dB (A)
- Heat dissipation: standby 22 W, max. 140 W

Mobile use

- In line with IEC721-3-3 (1997): with the following restrictions:
 - Temperature: +15° C to +35° C
 - Humidity: 15 - 75 % RH (non-condensing)
 - During transport: in line with IEC721-3-5: 5K1 and 5M3

Transport

- In line with: IEC 721-3-2 (1997): class 2K2, with the following restrictions:
 - -25 to +55° C (-4 to 131° F)

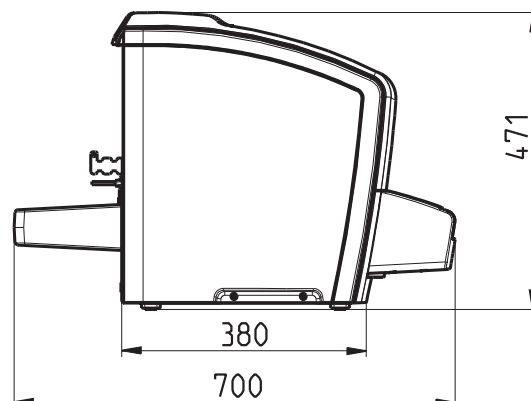
Storage

- Packed device shall withstand the following mechanical conditions: IEC 721-3-1: class 1M2 and IEC 721-3-2(1993): class 2M3; including sea transport.
- In line with IEC721-3-1: class 1K4

SAFETY

Approvals

- CE, cNRTLus



SAFETY

Region	Regulation	X-ray	Laser
Europe	EN/IEC 60601-1 edition 2	Regulation: 1987	EN 60825 - 1:2001
	EN/IEC 60601-1 edition 3		EN 60825 - 1:2007
	EN/IEC 60601-1-2		
USA	UL 60601-1	DHHS/FDA 21 CFR part 1002, subchapter B	DHHS/FDA 21 CFR parts 1040, 10 and 1040, 11
	21CFR part 820: good manufacturing practice for medical devices		
Canada	CSA22.2 No.601.1 No.601.1.2		CSA E60825-1 (R2007)

Why Agfa HealthCare?

Agfa HealthCare is a global leader in the fast growing market of integrated IT and imaging systems, offering healthcare facilities a seamless flow of information and a 360° view of patient care. The company has a unique, holistic approach, enabling it to provide in-depth clinical know-how and fully integrated hospital-wide solutions. These specialized solutions integrate IT and imaging systems for Radiology, Cardiology, Mammography and Orthopaedics. Agfa HealthCare's enterprise-wide IT platform integrates all administrative and clinical data within a healthcare facility and is designed to match the unique needs of specific healthcare professionals.

www.agfahealthcare.com

Agfa and the Agfa rhombus are trademarks of Agfa-Gevaert N.V., Belgium, or its affiliates. All other trademarks are held by their respective owners and are used in an editorial fashion with no intention of infringement. The data in this publication are for illustration purposes only and do not necessarily represent standards or specifications, which must be met by Agfa HealthCare. All information contained herein is intended for guidance purposes only, and characteristics of the products and services described in this publication can be changed at any time without notice. Products and services may not be available for your local area. Please contact your local sales representative at agfa.com for availability information. Agfa HealthCare diligently strives to provide as accurate information as possible, but shall not be responsible for any typographical error.

© 2013 Agfa HealthCare NV

All rights reserved

Printed in Belgium

Published by Agfa HealthCare NV

B-2640 Mortsel - Belgium

5YANN GB 00201303